



Antrim Road NW3

Parkheath
Sold on Service





Antrim Road, NW3

Asking Price

£1,175,000, Share of Freehold

Camden Band F

- Extremely spacious 2 double bedroom, 2 bathroom apartment
- Set in popular well maintained mansion block
- Direct access to well tended communal gardens
- Ground floor with over 1000 sq ft of well proportioned accommodation
- 19ft reception with wood flooring and feature fireplace
- 17ft dual aspect eat in kitchen diner
- 14ft main bedroom with en suite shower room and beautiful garden views
- Second double bedroom and bathroom with window
- Share of freehold
- Moments to Englands Lane, Primrose Hill and Belsize Park

Belsize Park
208 Haverstock Hill
NW3 2AG
Sales 020 7431 1234
Lettings 020 7431 3104
nw3@parkheath.com

South Hampstead
8a Canfield Gardens
NW6 3BS
Sales 020 7625 4567
Lettings 020 7644 0800
nw6@parkheath.com

West Hampstead
192 West End Lane
NW6 1SG
Sales & Lettings
Tel 020 7794 7111
192@parkheath.com

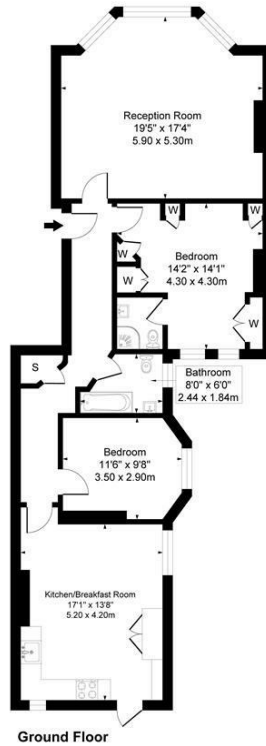
Kentish Town
148 Kentish Town Rd
NW1 9QB
Tel 020 7485 0400
kt@parkheath.com

Kensal Rise
54-56 Chamberlayne Rd
NW10 3JH
Tel 020 8960 4845
kensal@parkheath.com

Property Management
148 Kentish Town Rd
NW1 9QB
020 7433 6174
pm@parkheath.com

Antrim Mansions

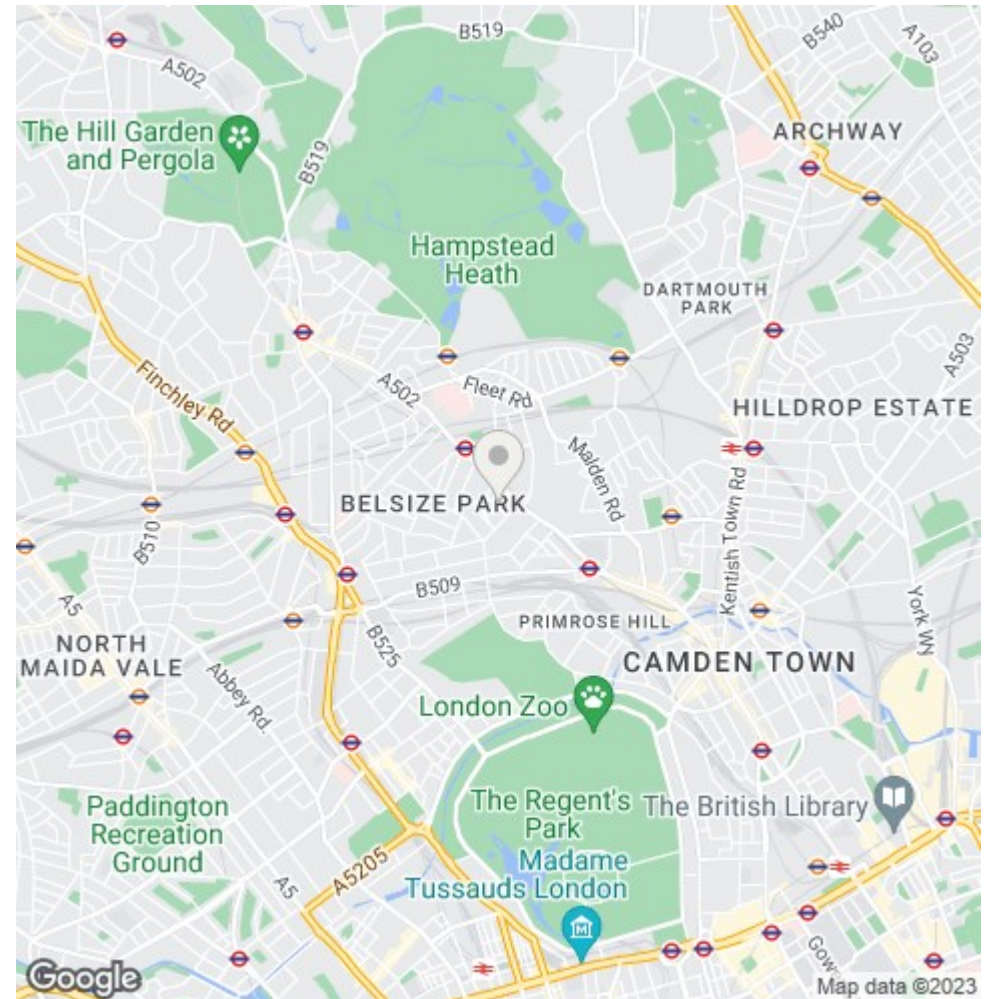
Approximate Gross Internal Area = 97.70 sq m / 1044 sq ft



Ground Floor

This plan is for layout guidance only. Drawn in accordance with RICS guidelines. Not drawn to scale unless stated. Windows & door openings are approximate. Whilst every care is taken in the preparation of this plan, please check all dimensions, shapes & bearings before marking any decisions reliant upon them.

ELLIE CLAIRE PHOTOGRAPHY LTD
www.ellieclairephotography.com



The particulars do not constitute part of an offer or contract. The particulars, including text, photographs and plans, are for the guidance only of prospective purchasers/tenants and must not be relied upon as statements of fact. The descriptions provided therein represent the opinion of the author and whilst given in good faith should not be construed as statements of fact. Nothing in these particulars shall be deemed a statement that the property is in good condition or otherwise or that any services or facilities are in good working order. All measurements are approximate